

Regional exchange on IWRM experiences in the Mekong Basin

15-17 October 2014-Vientiane Lao PDR

Integrated River Basin Management

in Cambodia

Stung Sen river basin

Prof. Puy LIM

Vice chairman of Tonle Sap Authority

Advisor of the Water Resources and Meteorology Ministry/Minister





Mekong River

Stung Sen River

181,035 Km²

© World Sites Atlas
(sitesatlas.com)



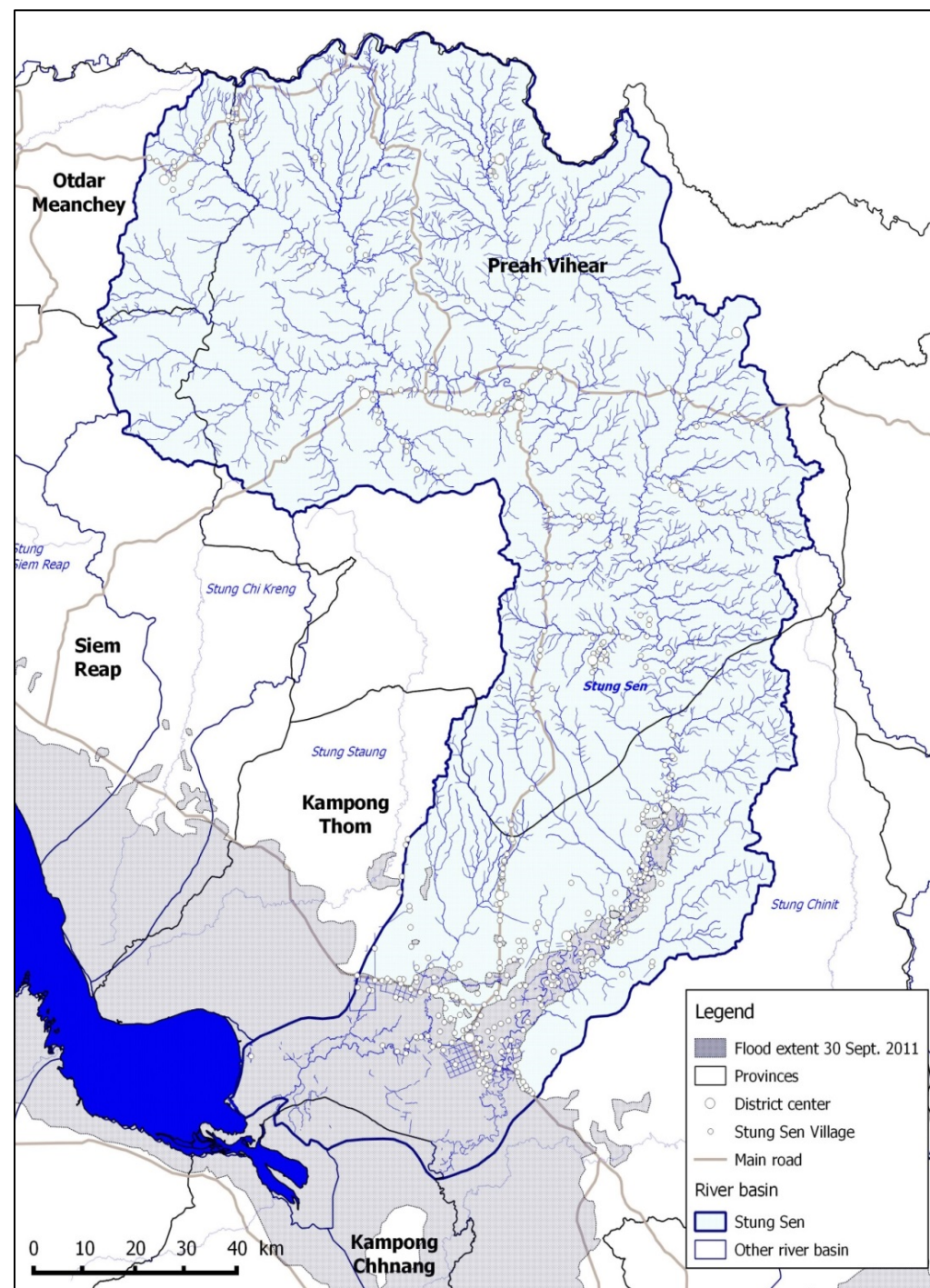
Hydrology of Stung Sen river basin

The Stung Sen River Basin is the largest among the 11 main tributaries around Tonle Sap Great Lake.

❖ Catchment surface: 16,344 Km² (1,634,400 ha)

❖ Perimeter of the catchment: 898.3 Km

❖ Total length: 520 Km

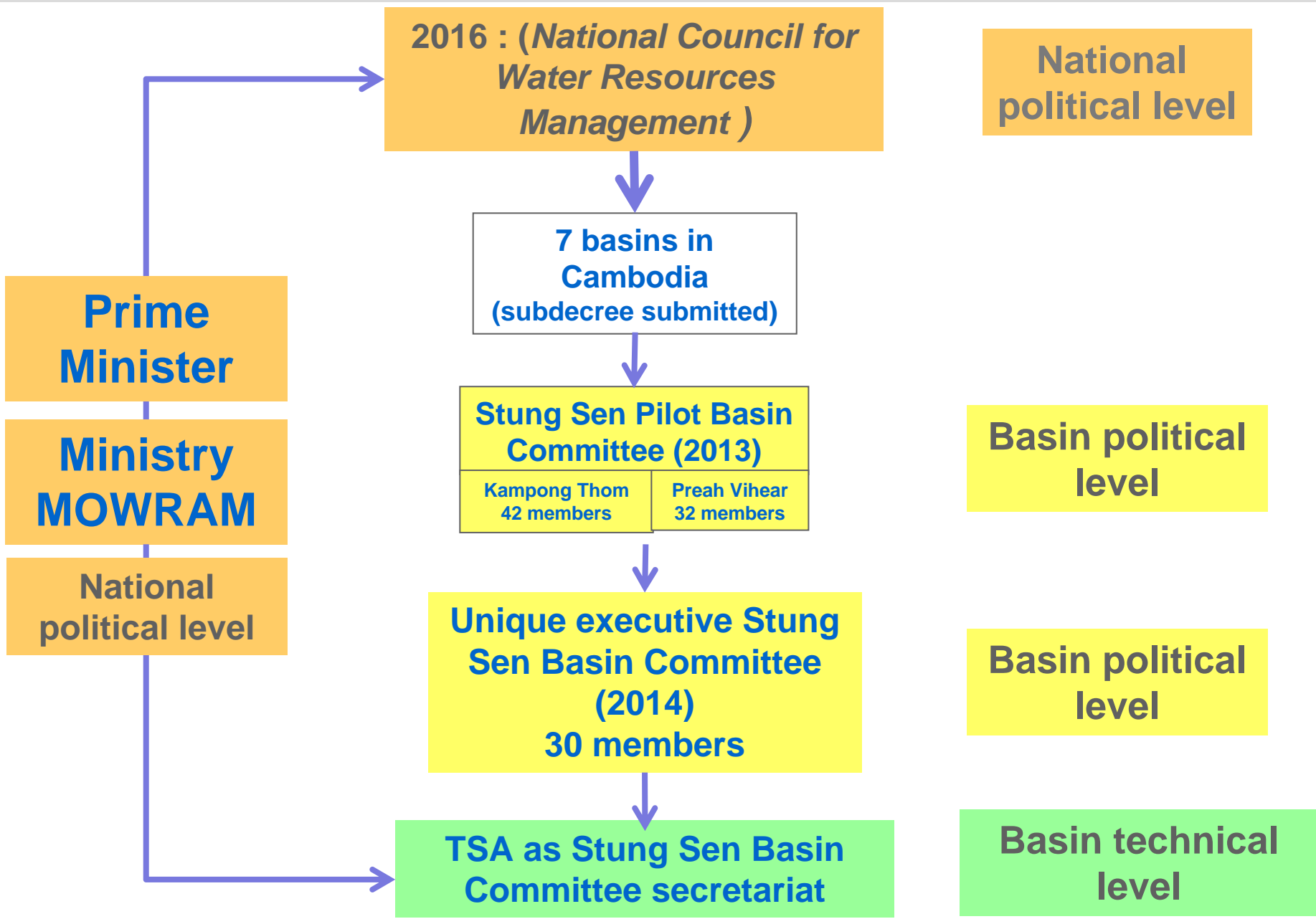


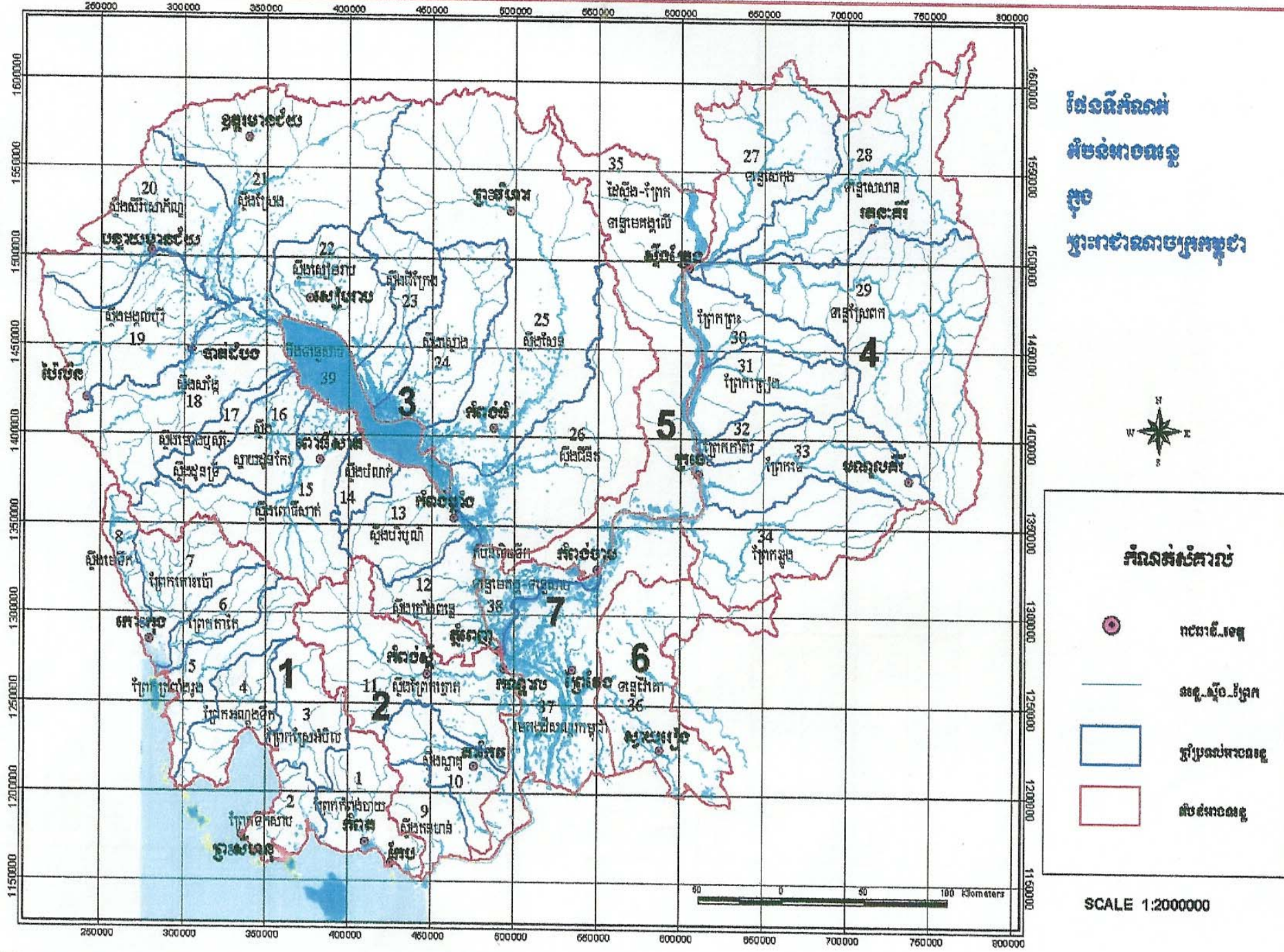


Integration of IWRB in the Cambodian law and in the national water management strategy

- **Law on water resources management (2007) gives the general framework**
- **Sub-decrees currently in the process of approval:**
 - **Water licensing, River Basin Management, Farmer Water Users Community, Water Quality**
 - **Establishment of the “ National Council for Water Resources Management ”**





Organization set up in Cambodia and involvement of different actors to prepare the plan



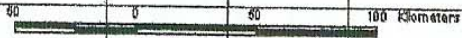


ផែនទីកំណត់
 តំបន់អាចរន្ត
 ក្នុង
 ប្រទេសកម្ពុជា

កំណត់សំគាល់

-  រាជធានី-ទេស
-  ទន្លេ-ស្ទឹង-ទីប្រក
-  ត្រីប្រលងអាចរន្ត
-  ព្រំដែនអាចរន្ត

SCALE 1:200000





To involve the actors:

- **Composition of the Basin Committee + executive Basin committee defined**
 - Province (Vice governor + PDMOWRAM + MAFF + land management)
 - Districts
 - Communes
 - Water users
 - Agricultors
 - Industry of Water

- **Meetings of the Committee:**
 - **October 2013 ; May 2014 ; October 2014**
 - Kompong Thom province + Preah Vihear povince





What is the situation in terms of IRBM Plan ?



The role of a Basin Committee has been defined

=

To be the leader of the process of Integrated River Basin Management at a political level





■ **The Basin Committee has to :**

- **Define a long term vision for the Stung Sen basin taking into account the sectorial interests**
- **Define a strategy of action at the river basin scale which will guide the action at local scale**
- **Allow the participation of all the stakeholders**
- **Define the planning and the process for action**
- **Define and organise the improvement of knowledge**

at a political level



■ 1. A sustainable development vision

Same importance for socio-cultural, economical & environmental aspects

■ 2. Integration

Decisions taking into account all interests

* Industry, agriculture, fisheries, water supply for populations, nature values and functions (biodiversity wetlands)...

■ 3. Scale

Strategy at the river basin scale, actions at a local scale

Administrative scale not adapted => to work together at the basin scale

■ 4. Governance

Implication of all the stakeholders

■ 5. Capacity for planning

■ 6. Knowledge

Ecosystems, activities and their impacts, socio-economical aspects...



- To prepare the decisions of this political structure, there is a need of a technical and logistical work
- In Cambodia = The role of the Tonle Sap Authority as secretariat of the Stung Sen Basin Committee



The role of the Tonle Sap Authority as secretariat of the Stung Sen Basin Committee

Technical role

- To prepare the technical contents and the documents containing the information needed by the Basin Committee to decide
- To explain the context, proposing decisions and explaining the advantages/disadvantages of each proposal

Logistical and communication role

- To define the agenda of each meeting
- To make the link with the Basin Committee
 - writing and sending the documents to the basin Committee before the meetings
- To organise the work of the eventual working groups
- To communicate on the decisions of the Basin Committee

A river with a good quality (ecological, chemical) is ...

Biodiversity and food : a life insurance for tomorrow



Agriculture



Flood regulation



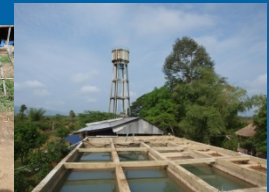
Drought regulation



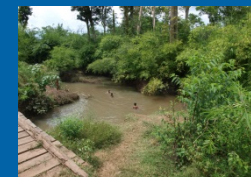
Easier access to drinking water



Industry

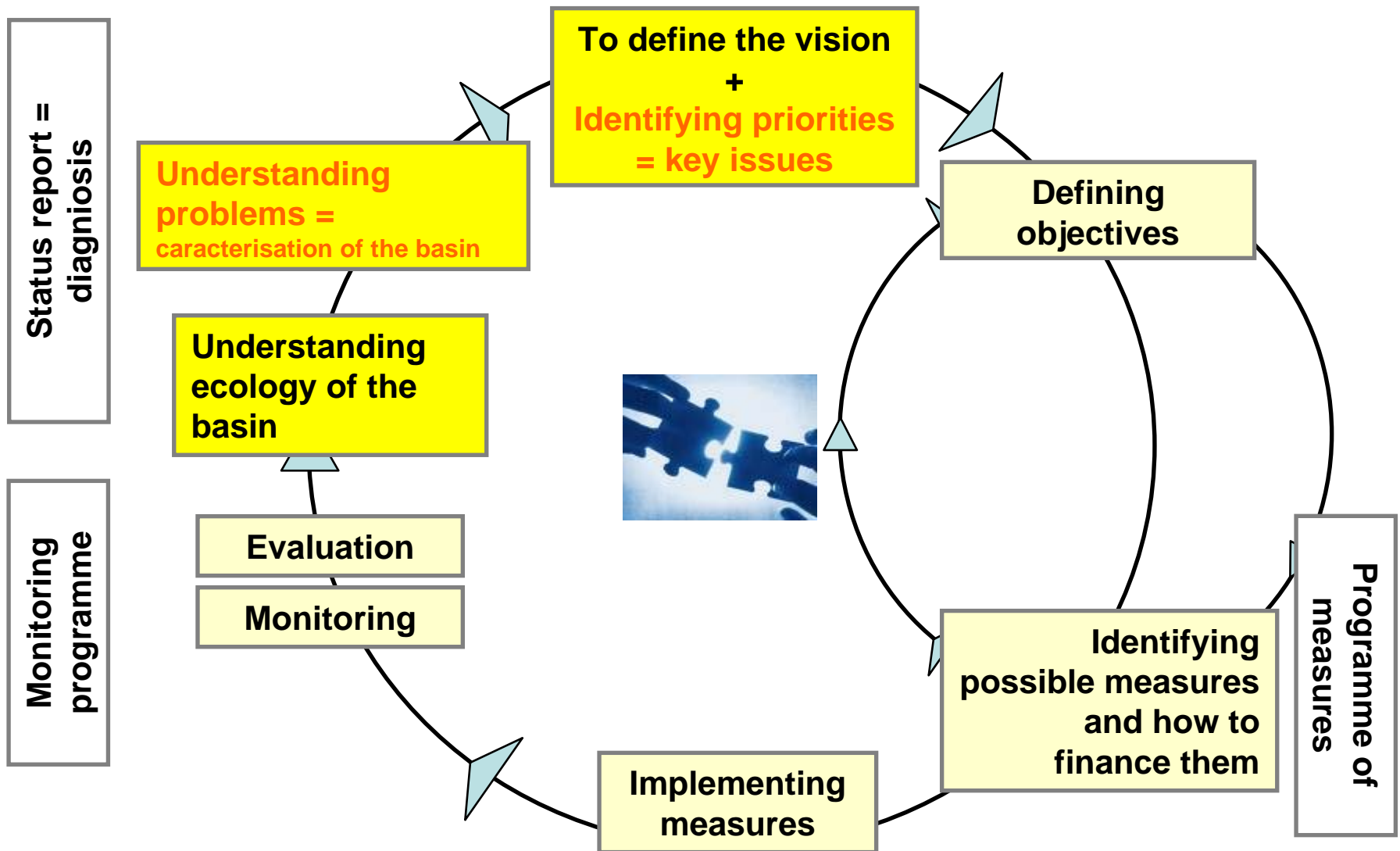


Daily life



... a river which provides free services to human societies

Steps for River basin management plan preparation



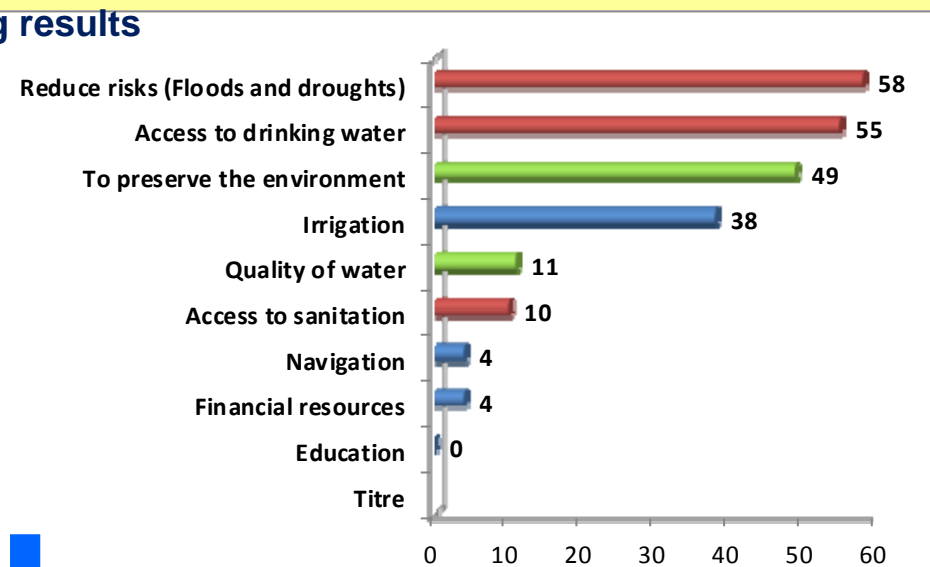
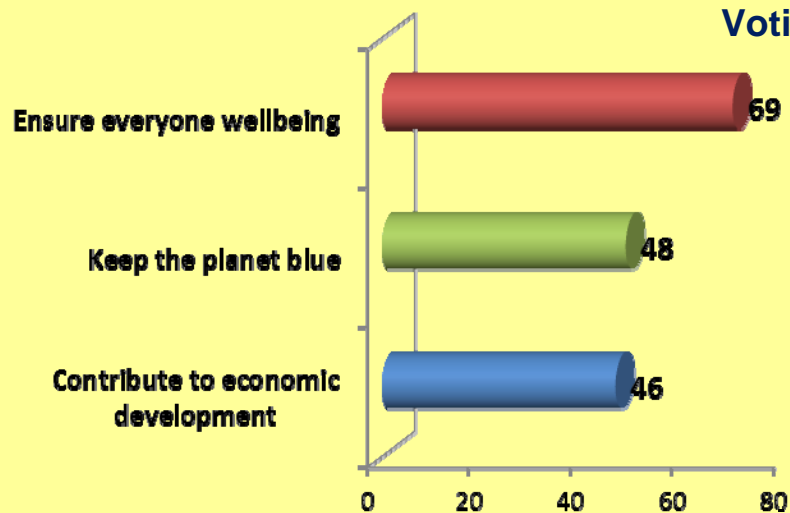
Priorities identified for the Stung Sen basin

May 2014 : participative workshop to identify priorities

- Kampong Thom province : 41 persons voting
- Preah Vihear province : 34 persons voting

3 subjects :

- Ensure everyone wellbeing
- Contribute to economic development
- Keep the planet blue



Priorities (main issues) identified :

1. Reduce risks (Floods and droughts)
2. Access to drinking water
3. To preserve the environment
4. Irrigation

Where we are and ... next steps

In course (where we are) :

- Governance definition (roles of Basin Committee, of TSA)
- Basin characterisation
- Priorities (main issues) identification
 - Voting of Basin Committee = First step done
 - To be confirmed by monitoring data



Flood and drought
regulation



Irrigation



Environment preservation



Access to drinking water

Where we are and ... next steps

To be done (next steps)

■ **2014** : To write the functioning rules

■ **To define Action plan**

■ **2014-2015** : **Definition of objectives**

- Quantified targets + milestones
- Level of water quality to reach

■ **2016** : **Definition of a programme of actions**

- Identification of actions (Investments, capacity building, knowledge)
- Financing plan



Preventing overfishing



Irrigation



Access to drinking water



Where we are and ... next steps

To be done (next steps)

- Implementing measures (actions)
- Monitoring
 - To assess water quality
 - To assess efficiency of actions
 - To improve knowledge



Meteorologic station

Radar



Thank you for your attention



អរគុណ ណាច្រើន !