


Transboundary water collaboration in Central Asia (ICWC)

Debrecen

INBO, 7 June, 2007

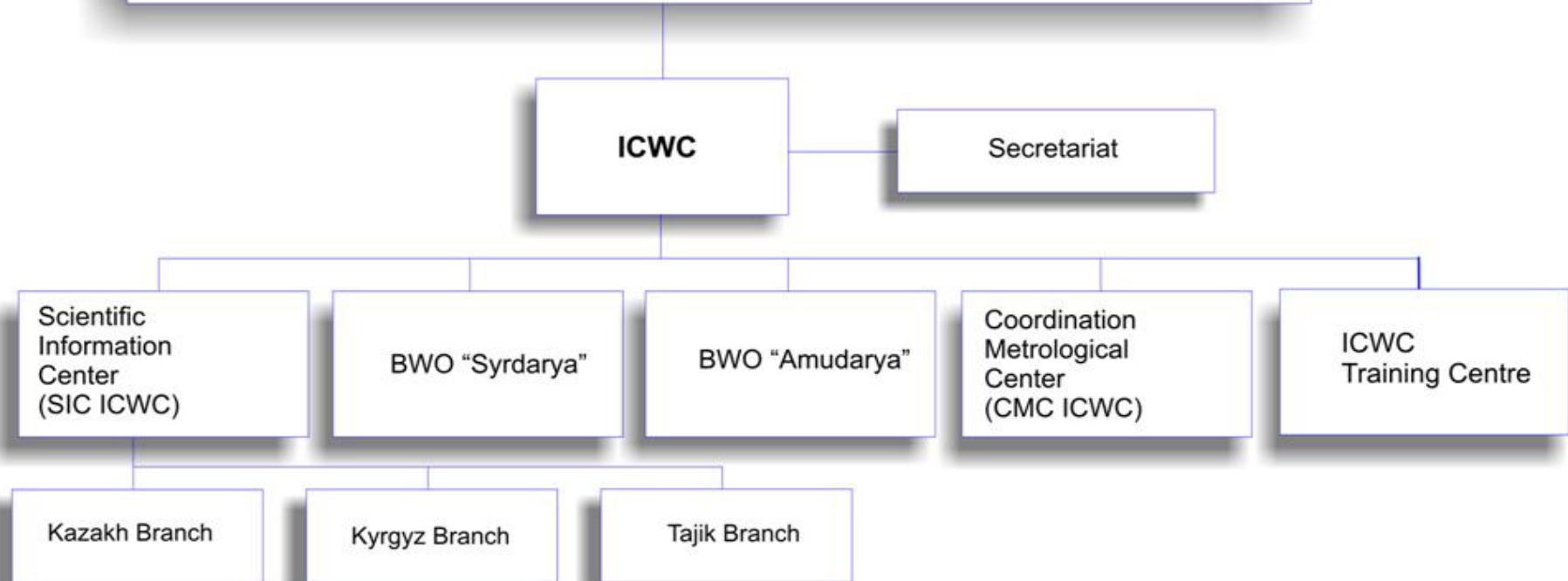
Prof. V.A.Dukhovny, Director SIC ICWC



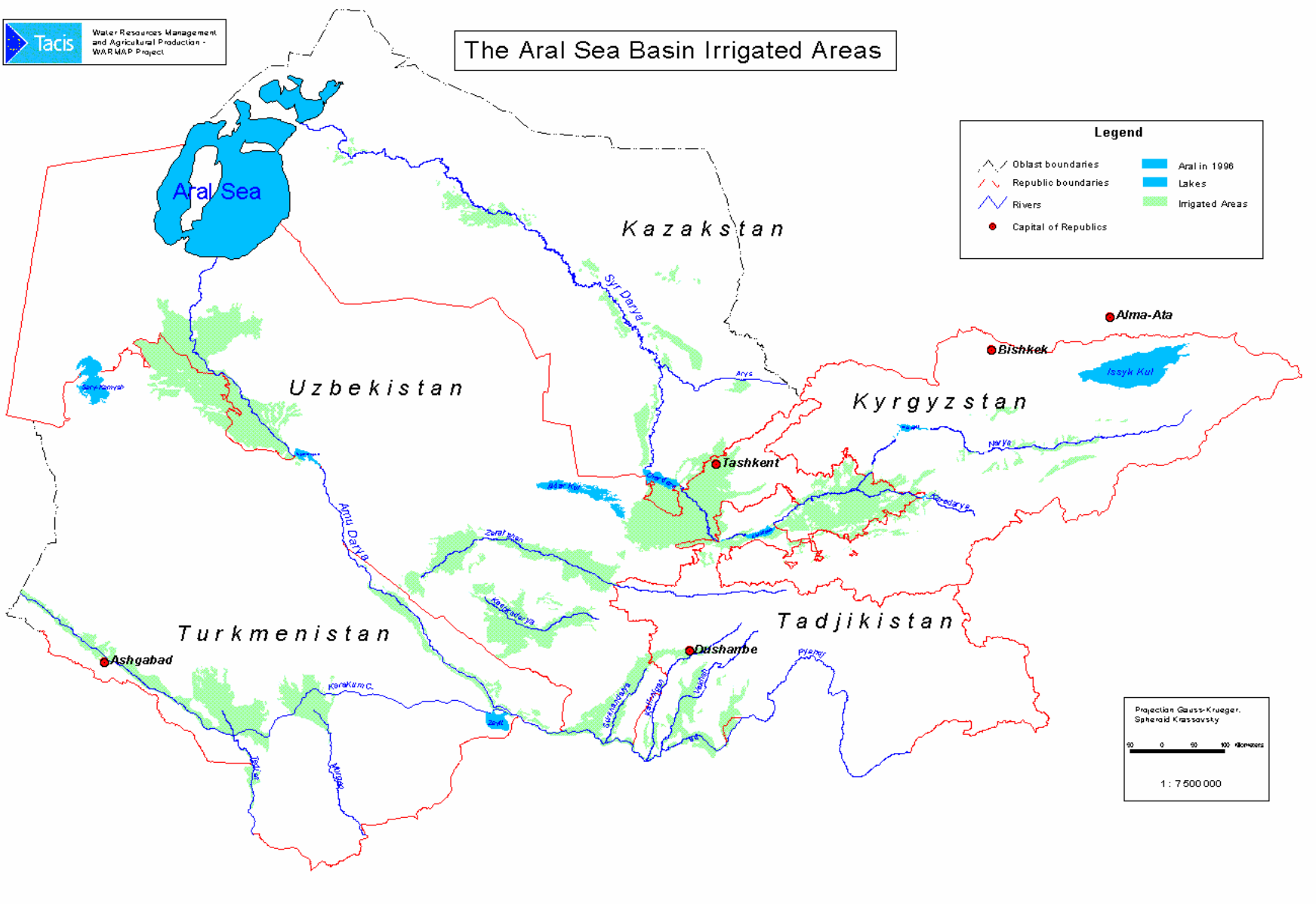
ICWC was organized after the collapse of Soviet Union as single interstate body , which was created immediately after independence on the base of Ministries of irrigation and water five states of Central Asia.

STRUCTURE of Interstate Coordination Water Commission of Central Asian states

FOUNDERS OF ICWC



The Aral Sea Basin Irrigated Areas



Legend

- Oblast boundaries
- Republic boundaries
- Rivers
- Capital of Republics
- Aral in 1996
- Lakes
- Irrigated Areas

Projection Gauss-Krueger.
Spheroid Krassovsky

0 50 100 Kilometers

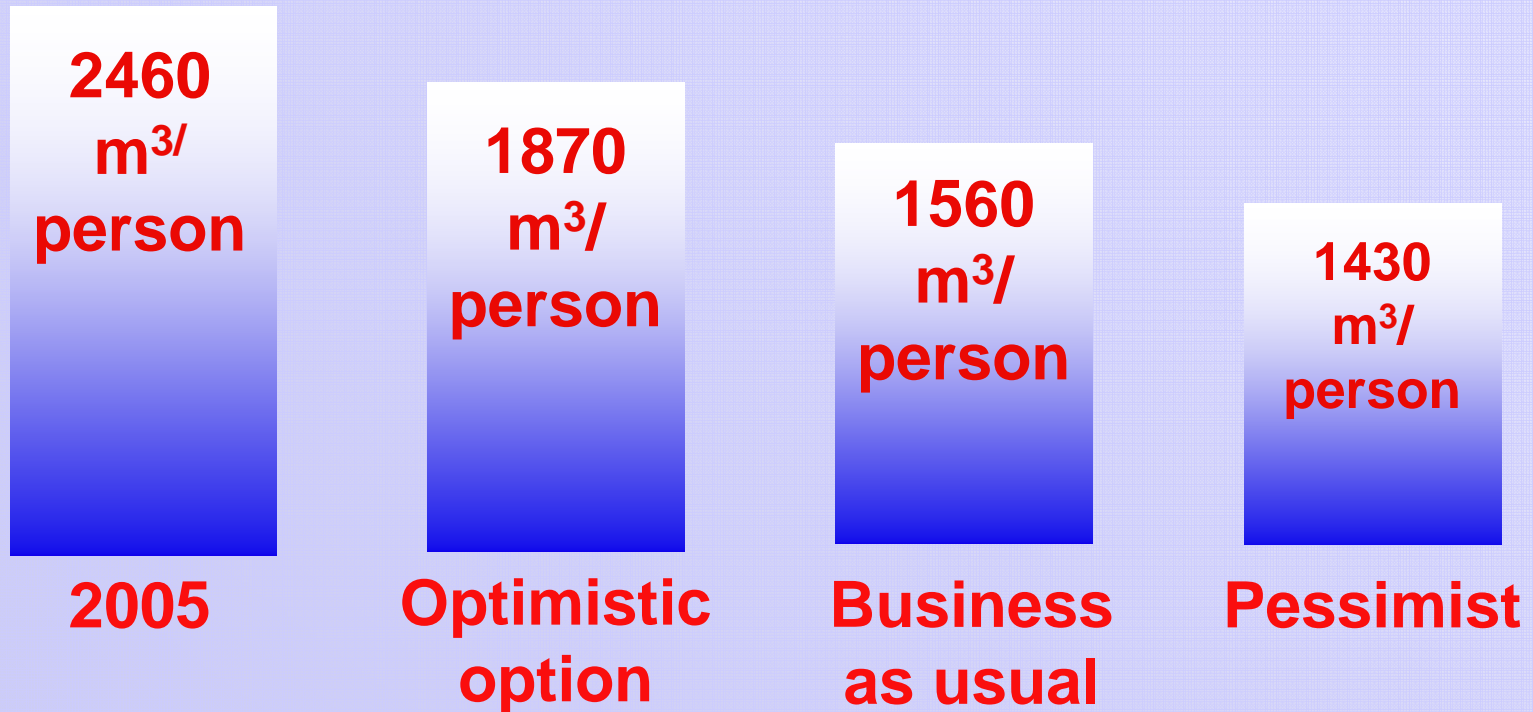
1 : 7 500 000



Principle directions of works

- **Core activity of ICWC (long term planning, preparation of meetings, legal framework; institutional strengthening, public awareness; support of communications);**
- **Collaboration with international community;**
- **Implementation of IWRM;**
- **Research and science;**
- **Capacity building;**
- **Information system;**
- **Training system.**

What can we expect in 2030?



IWRM is a system of management that should include integration of:

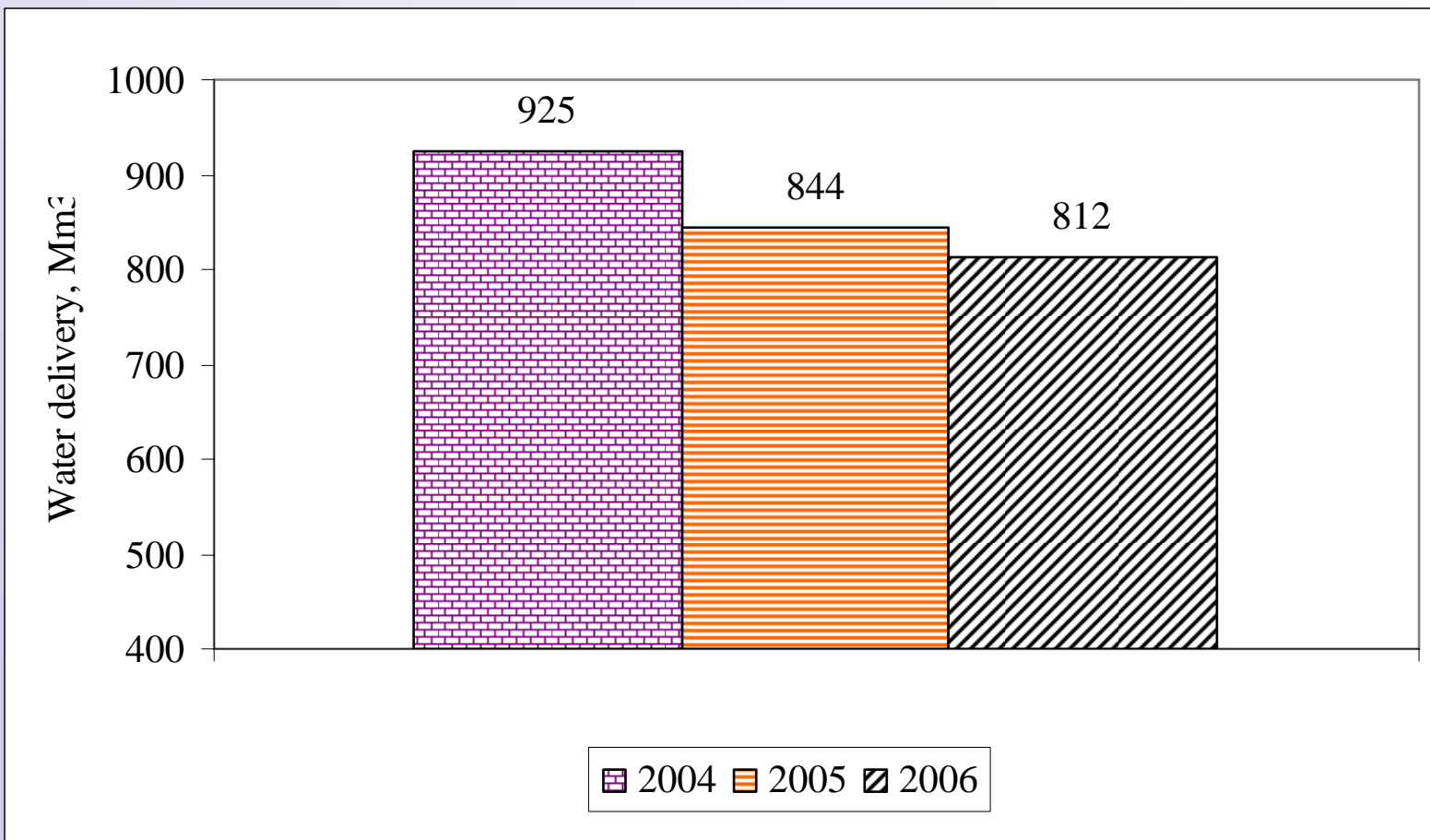
- all types of water,
- all levels of water hierarchy [basin – system – canal – WUAs – farmers or water consumers] from "bottom to top" by requirements and inputs and from "top to down" by limitations and rules;
- all branches of water systems on the horizontal level [hydropower – water supply – irrigation – fishery – nature];
- civil society and water management organizations;
- nature and society.

All types of integration need to be oriented towards the achievement of potential productivity of water in each water use.

IWRM

- **First steps in the region;**
- **National Plan in Kazakhstan, Road map in three other states;**
- **IWRM Fergana Valley;**
- **IWRM lowlands (feasibility study);**
- **Roadmap for IWRM Kyrgyzstan, Tajikistan and Uzbekistan.**

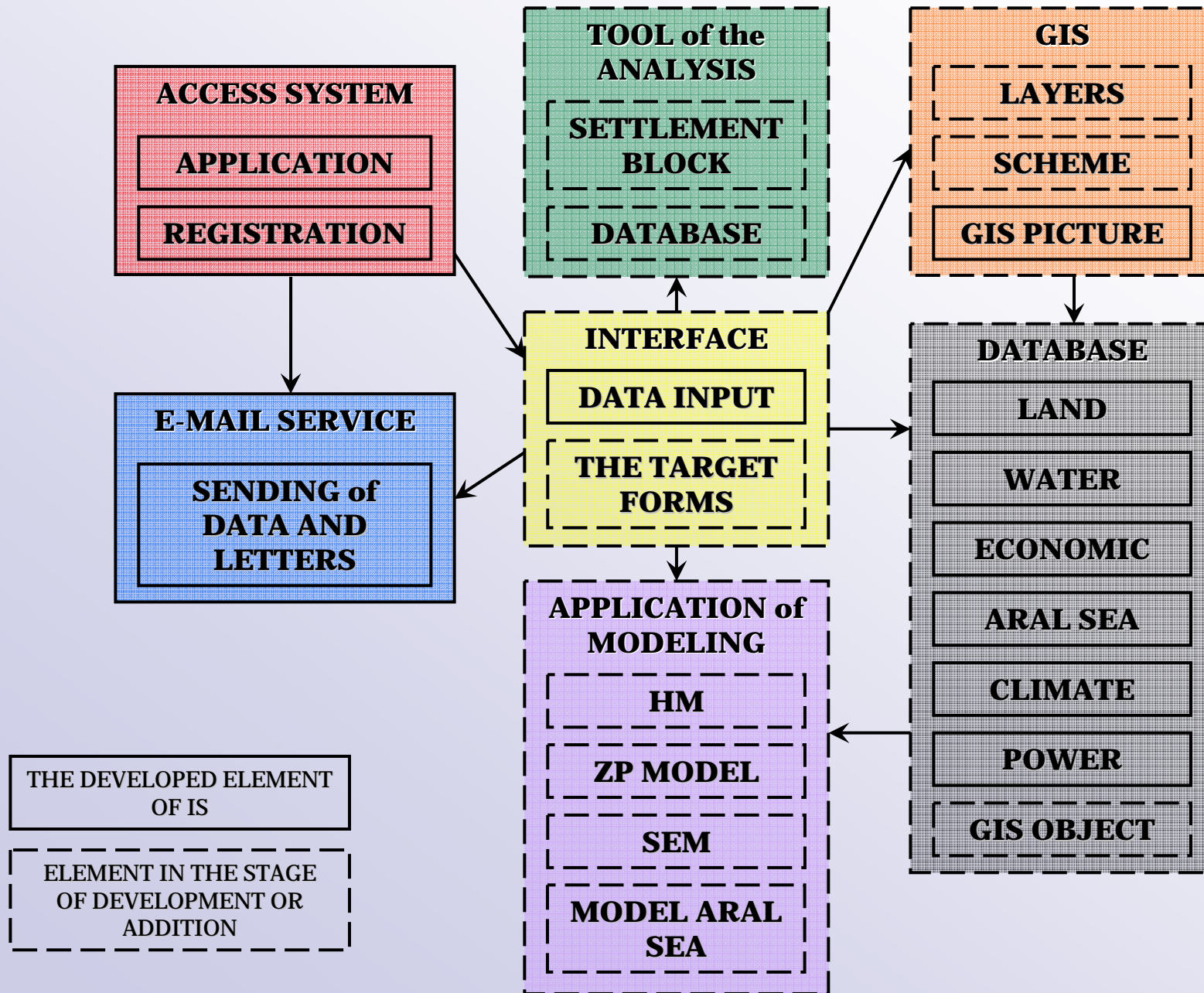
SFC. Actual water delivery. Growing season



CAREWIB is implemented in support of the interstate and national management and development of water and ecological sectors of the Aral Sea basin. It is intended for ongoing and perspective planning of water-agriculture-economic problems at a level of the departments and ministries, ICWC and decision makers.



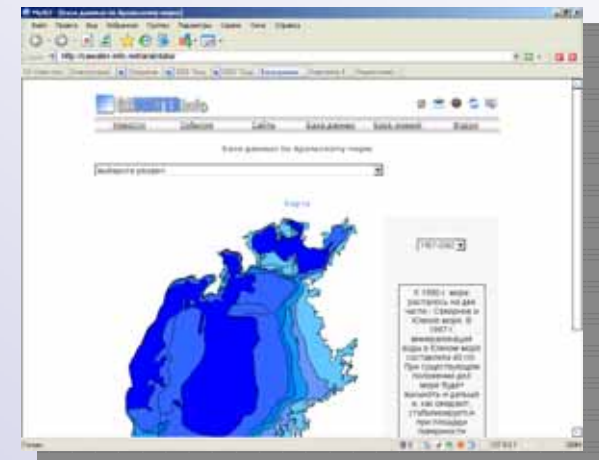
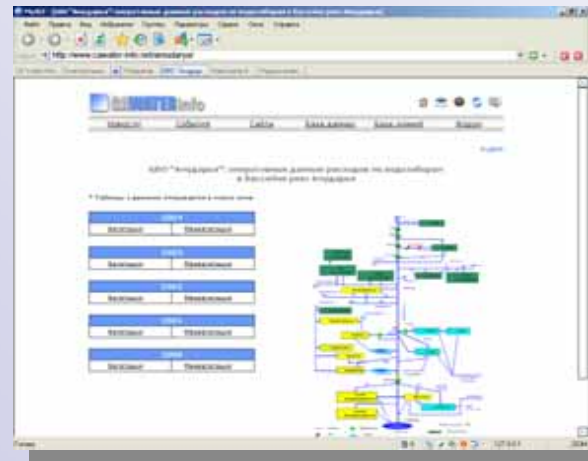
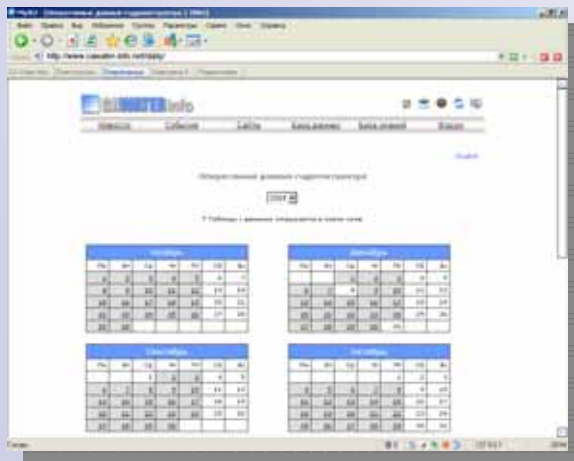
THE COORDINATION SCHEME OF BASIC BLOCKS IN THE IS



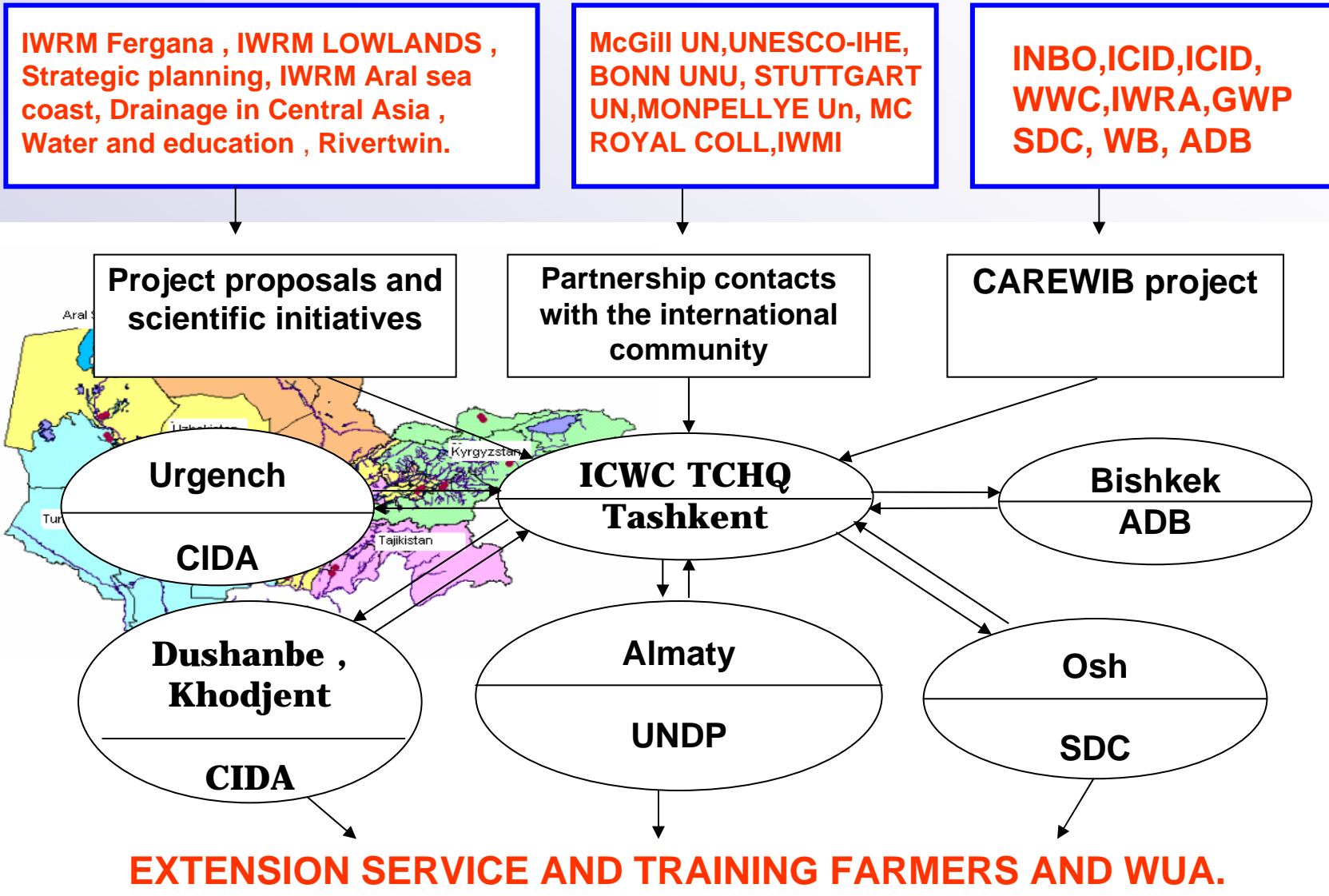
Information system on the Internet: on-line data

www.cawater-info.net

The data on intakes in the Amudarya and Syrdarya river basins are called to help the personnel engaged in distribution of water resources in the Aral Sea basin. The comparison of operative forecasting and fact sheet will allow the experts to raise quality of water resources management in the region.



PROJECTS and SCIENCE. PARTNERSHIP. INFORMATION



Training activity



Distribution of participants of ICWC Training Centre's courses by country and year:

PERIOD:	MONTH	DAY	YEAR
FROM:	APRIL	1	2000
TO:	SEPTEMBER	30	2005

Countries	KZ	KG	TJ	TM	UZ	Other countries	Total
2000	9	11	11	6	12	-	49
2001	63	45	55	27	99	7	296
2002	76	71	60	28	104	5	344
2003	41	89	64	30	159	1	384
2004	73	85	74	38	227	1	498
2005	49	90	76	39	192	9	455
Total	311	391	340	168	793	23	2026