



CORMAGDALENA

Corporación Autónoma Regional del Río Grande de la Magdalena
Empresa industrial y comercial del Estado



ONF Andina



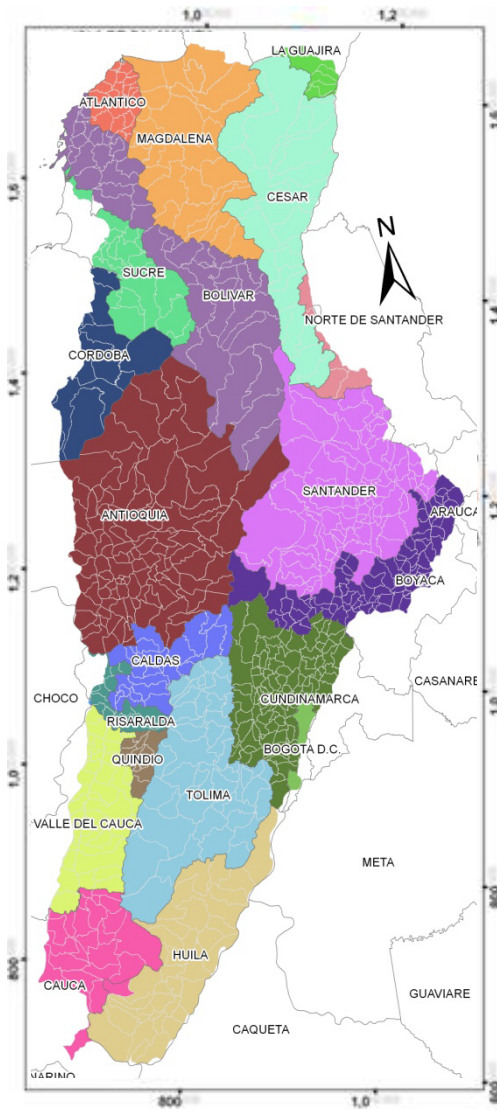
Fonds Français
pour l'
Environnement Mondial

MANAGEMENT PLAN OF THE MAGDALENA RIVER BASIN (PMC)

- Basin Area Magdalena-Cauca
257.000 Km²
- 33'000'000 in habitants,
70% of Colombian Population
- PMC, has been developed in
5 phases since 2006. Life-
time 2009-2019



MANAGEMENT PLAN OF THE MAGDALENA RIVER BASIN



What is PMC ?

- A technical tool which allow CORMAGDALENA to fulfill its legal obligations:

- *COORDINATION AND SUPERVISION OF:*

- *HIDROLOGIC MANAGEMENT*
- *INTEGRATED MANAGEMENT OF MAGDALENA RIVER*

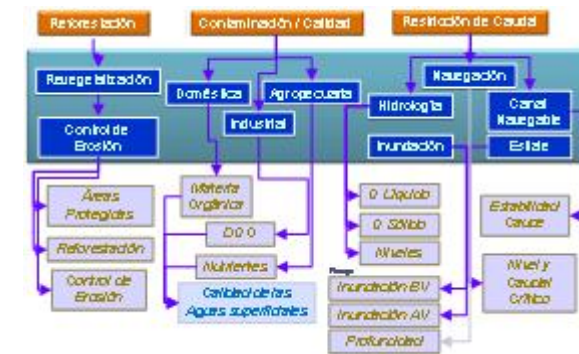
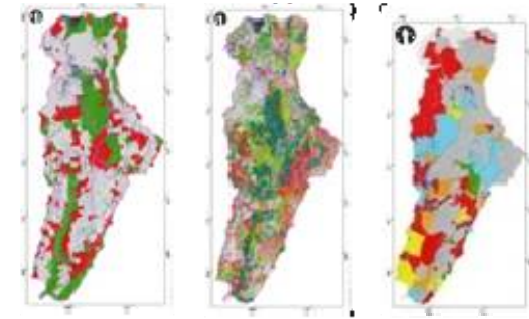
INVOLVING THE REGIONAL ENVIRONMENTAL AUTHORITIES AND OTHERS BASIN ACTORS

INSTITUTIONS, AND FRACTIONING OF GOVERNANCE

- *24 Regional environmental authorities*
- *729 municipalities*
- *28 Departments (State or Provinces)*

PMC COMPONENTS

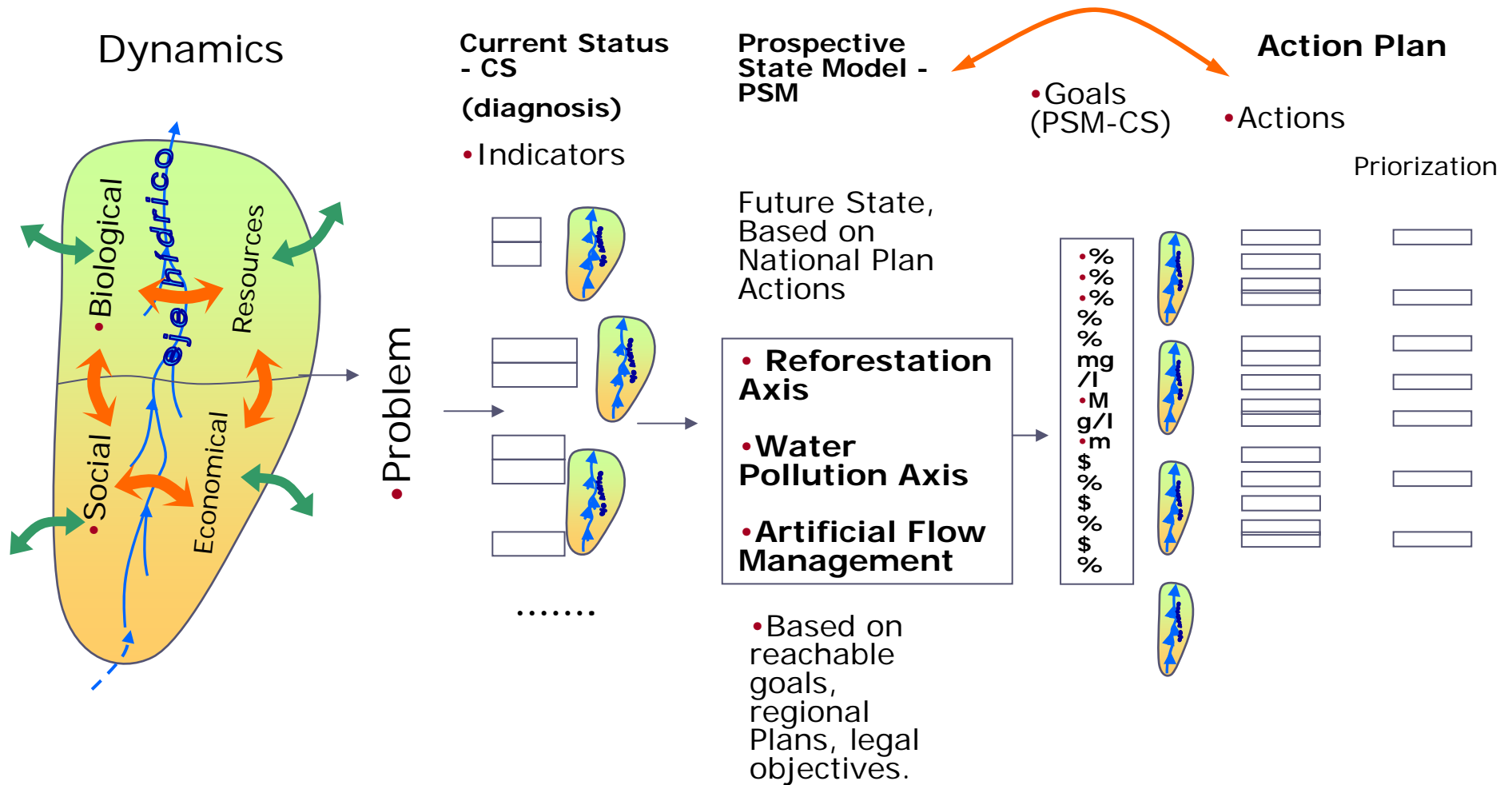
- **Thematic Axes**
 - Reforestation
 - Water Pollution
 - Artificial Flow Management
- **Indicators System**
- **The Sceneries**
 - Current Status,
 - Quality Objectives,
 - Interventions' Priorization
- **The Action Plan**
- **Management Platform**



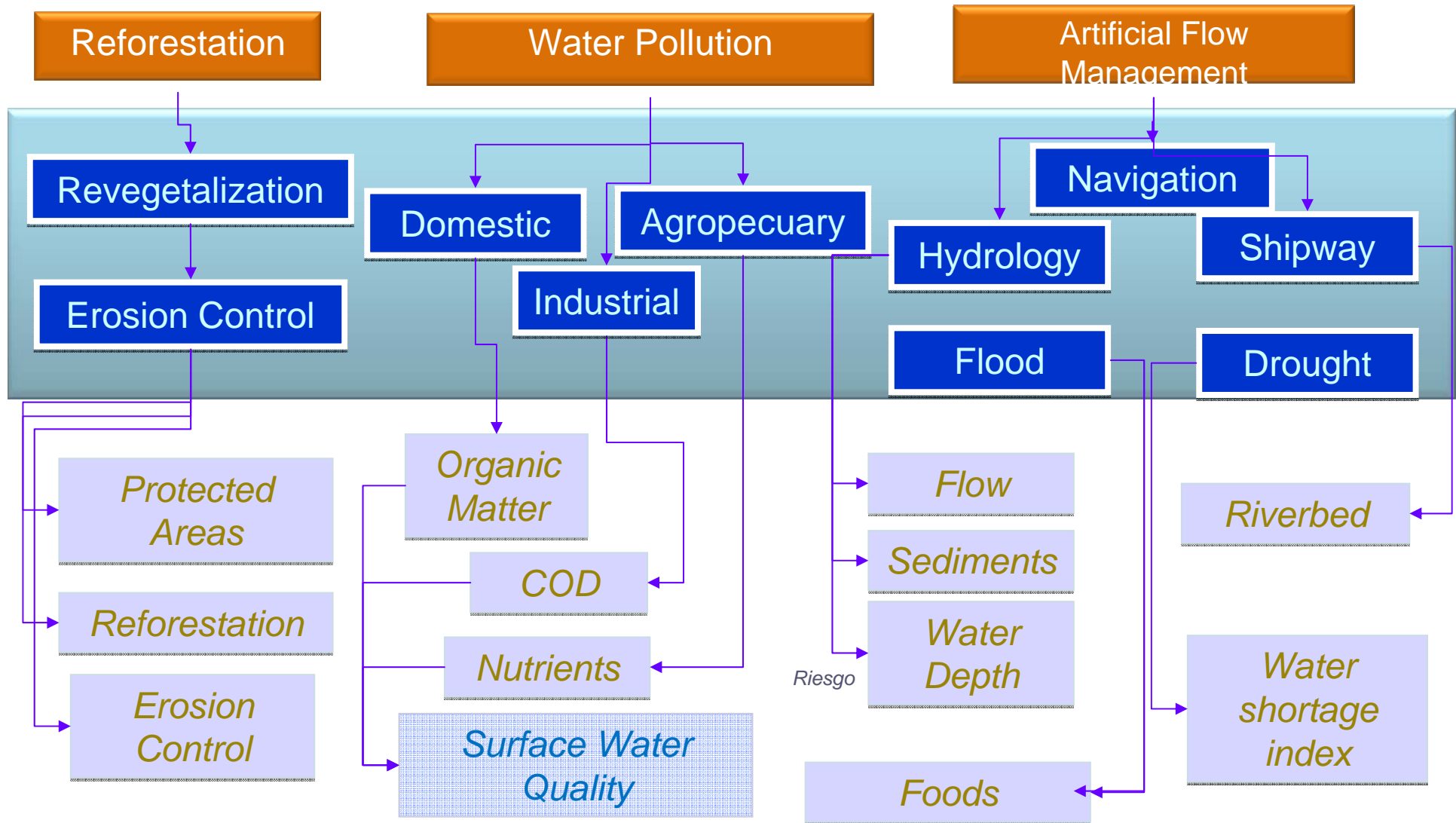
Corporación Autónoma Regional del Río Grande de la Magdalena
CORMAGDALENA
LISTADO DE ACCIONES SUGERIDAS POR EL PLAN DE MANEJO DE CUENCA PMC

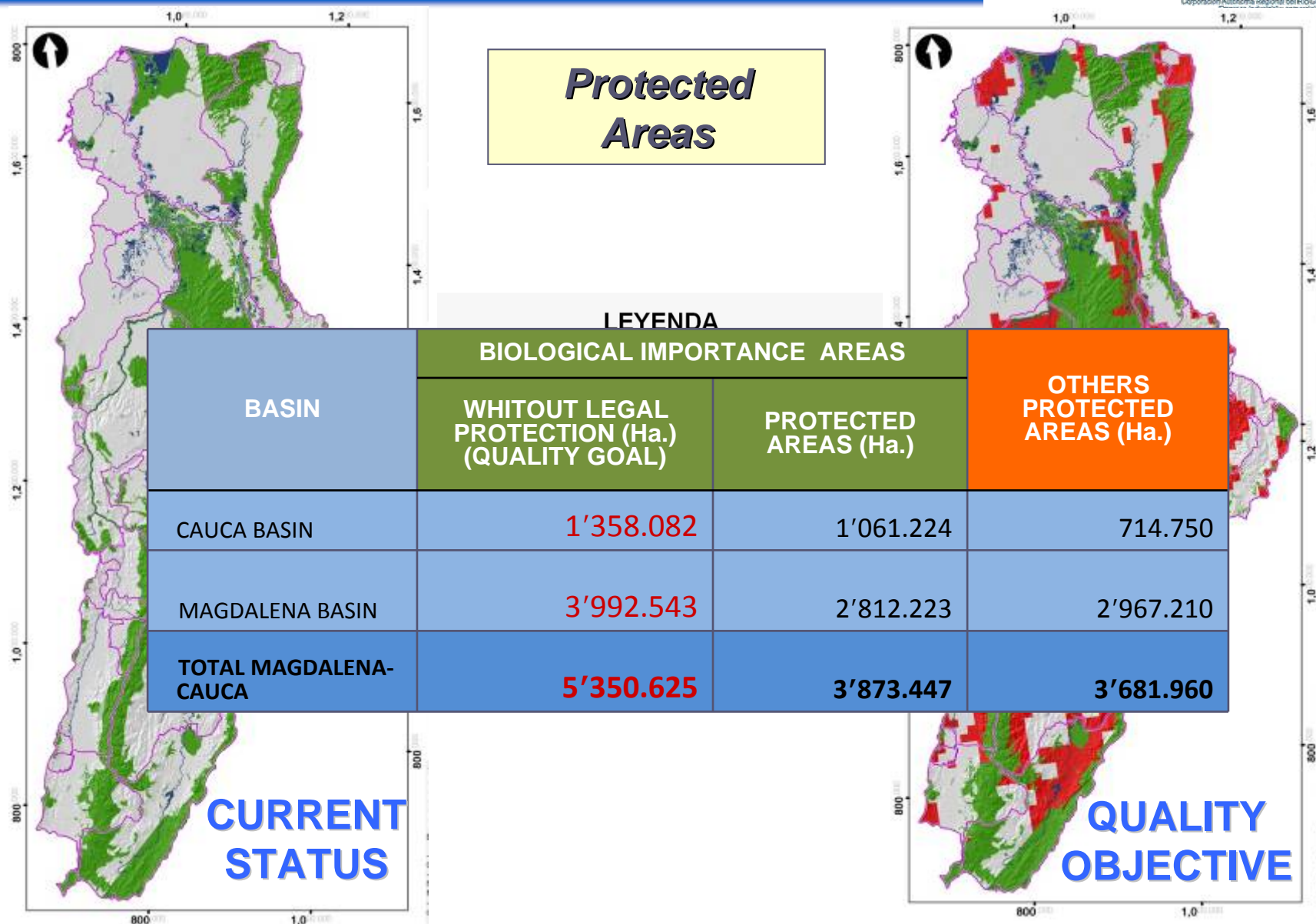
Acción	Descripción	Responsable	Fecha de Inicio	Fecha de Finalización
1	Reforestación en el área protegida...
2	Control de erosión en el área...
3	Monitoreo de la calidad del agua...
4	Manejo de las aguas superficiales...
5	Control de las inundaciones...
6	Establecimiento de cauce...
7	Análisis y control crítico...

GENERAL SCHEME OF PMC MODEL



PMC INDICATORS SYSTEM





THANK YOU

GRACIAS

[www.cormagdalena.com.c](http://www.cormagdalena.com.co)

O

mlondono@cormagdalena.com.co