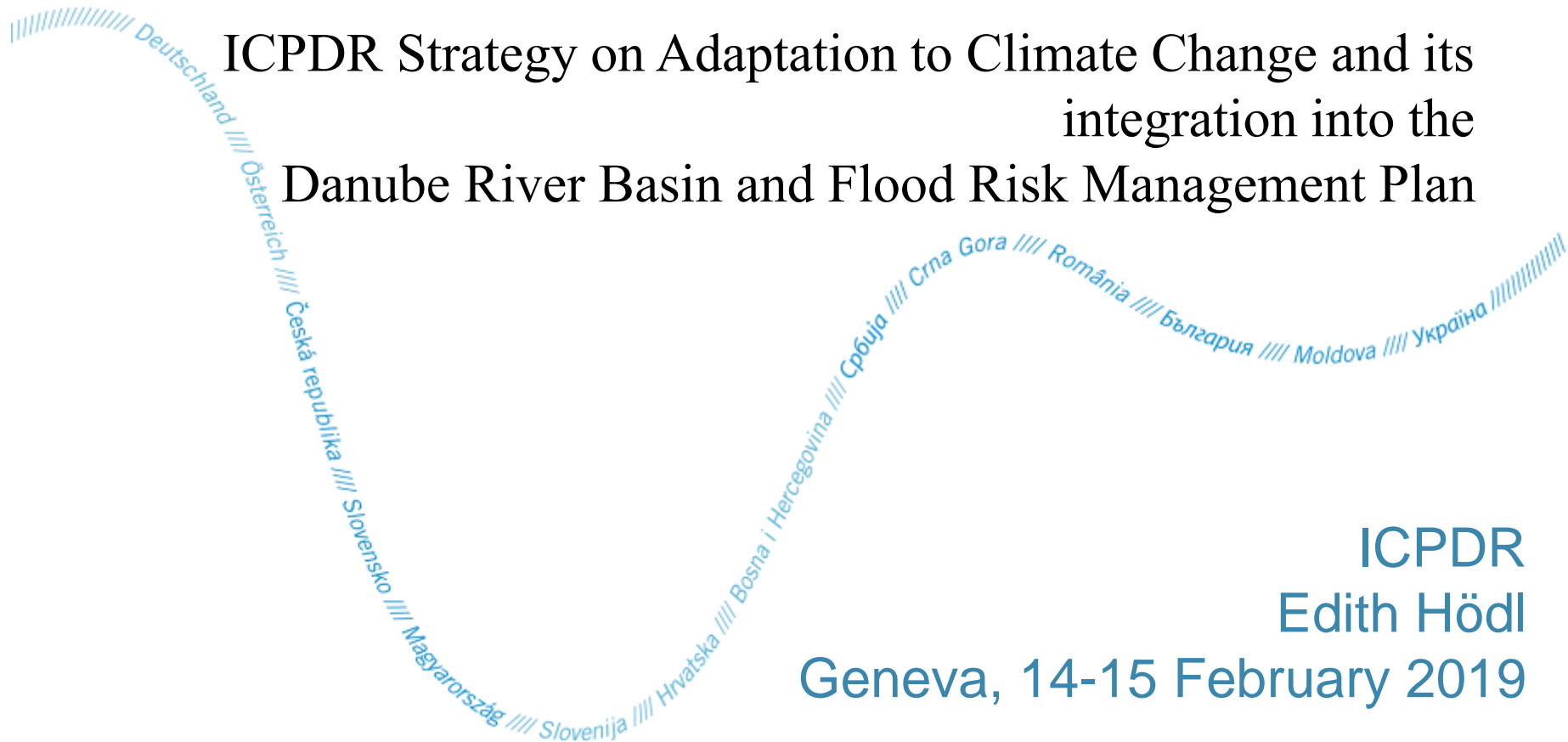


# ICPDR and Climate Change Adaptation



ICPDR Strategy on Adaptation to Climate Change and its integration into the Danube River Basin and Flood Risk Management Plan



ICPDR  
Edith Hödl  
Geneva, 14-15 February 2019

---

# Table of Content

---



- Update of ICPDR Strategy on Adaptation to Climate Change in 2018
- ICPDR Approach for Integrating Climate Change Adaptation into Danube River Basin and Flood Risk Management Plan (DRBMP and DFRMP)
- ICPDR Activities and Next steps in Implementation of Strategy
- Lessons Learnt and Recommendations

---

# ICPDR Strategy on Adaptation to Climate Change in 2018 (1)

---

ICPDR Strategy on Adaptation to Climate Change 2012 was **updated** in 2018 taking into account

- **new scientific results** and
- **implementation steps** taken in the Danube countries

## **Aim and objectives**

- Offering **guidance** on the integration of climate change adaptation into ICPDR planning processes
- Promoting **action** in a multilateral and transboundary context
- Serving as **reference document** influencing national strategies and activities

---

# ICPDR Strategy on Adaptation to Climate Change in 2018 (2)

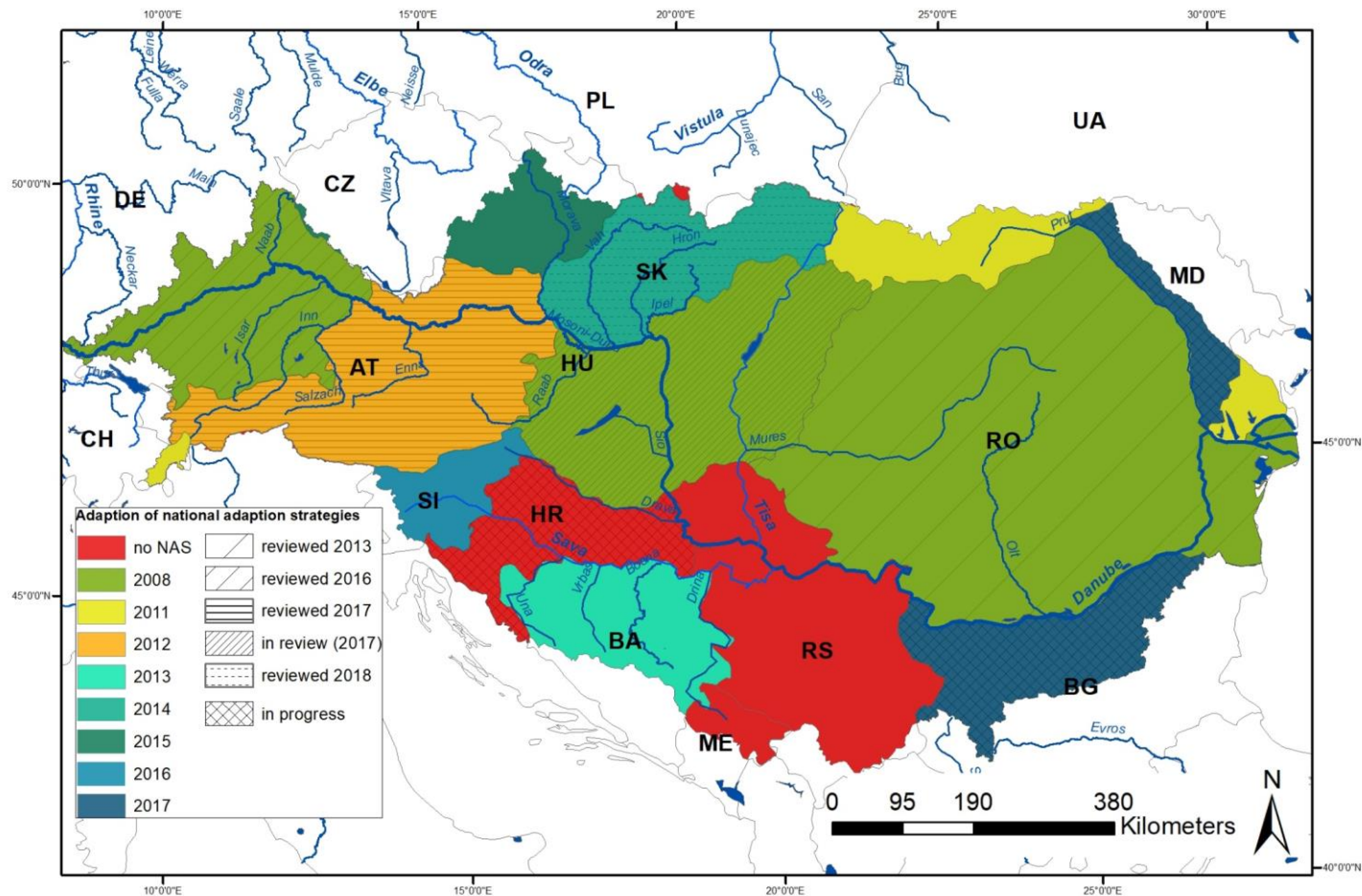
---

## Process

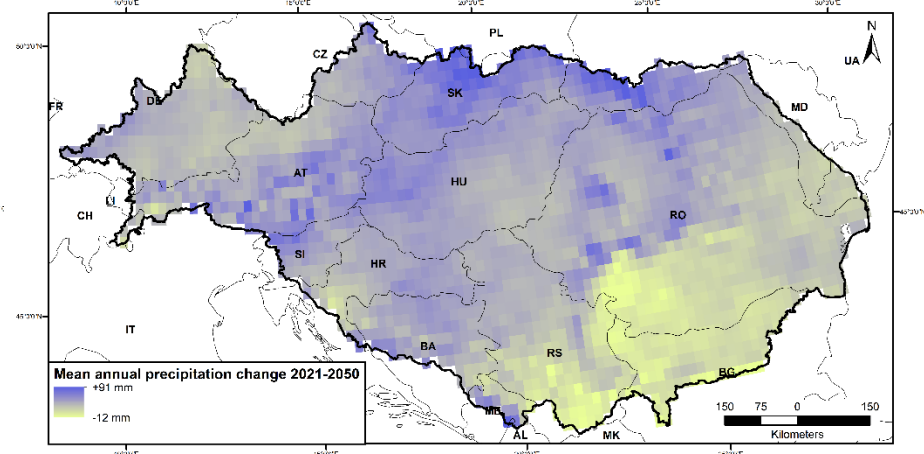
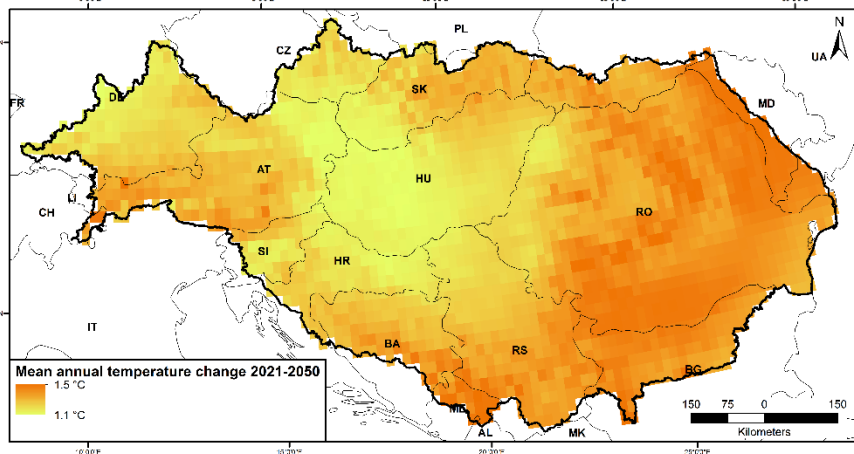
- Update of the **knowledge base and scientific Danube Study** including scenarios, impacts on water resources and adaptation measures (2017)
- **Discussion of key findings** and conclusions of the updated Danube Study at the **ICPDR Climate Change Adaptation Workshop** (March 2018)
- Update of the existing strategy based on **scientific results and legislative and policy instruments in place** (2018)
- **Broad participation of relevant ICPDR EGs and TGs** including nominated experts and ICPDR observer organizations

# ICPDR Strategy on Adaptation to Climate Change in 2018 (3)

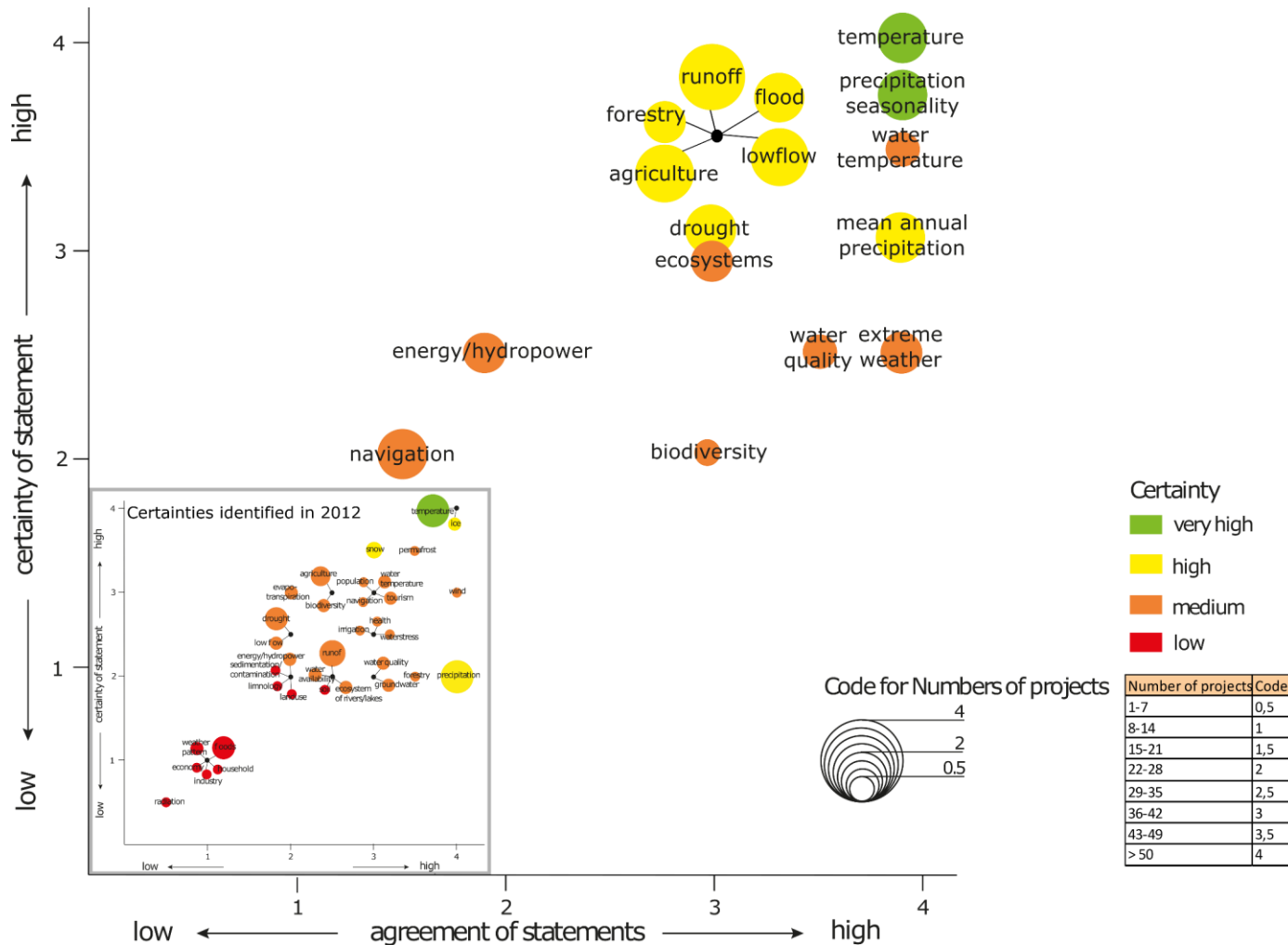
## Updated National Adaptation Strategies (NAS)



# ICPDR Strategy on Adaptation to Climate Change in 2018 (4)



# ICPDR Strategy on Adaptation to Climate Change in 2018 (5)



---

# ICPDR Approach for Integrating Climate Change Adaptation (1)

---



- **Joint understanding** of scenarios, impacts and adaptation measures and sharing a scientific knowledge base is essential
- Strategy does not include a separate programme of measures, but relevant action is **incorporated in the DRBMP and DFRMP**
- **Key cross-cutting issue** all ICPDR Expert Groups and Task Groups are mandated to fully integrate climate change adaptation in the development of DRBMP and DFRMP
- Strategy focuses on issues relevant at the Danube basin-wide level (level A) and **needs to be complemented** with further detailed planning on adaptation at sub-basin, national and/or sub-unit level



---

# ICPDR Approach for Integrating Climate Change Adaptation (2)

---



- **Consultation on competing uses and priorities** to prevent potential conflicts is needed to take into account potential target conflicts and competition between different water-related users and sectors such as *agriculture, navigation, water supply, energy, industry, tourism, environment and nature protection*
- **Communication, coordination and stakeholder involvement** on climate change adaptation issues is ensured at the national level, through the ICPDR and also through different projects
- Building resilience against climate change impacts on water resources through **capacity building, transboundary cooperation and benefit-sharing** is a key priority to address climate change in the Danube River Basin

---

# ICPDR activities and next steps (1) **ICPDR** IKSD

---

- Danube basin wide monitoring activities regularly take place via the **ICPDR Transnational Monitoring Network (TNMN)** including the monitoring of impacts of climate change
- Planned **Danube Hydrological Information System (HIS)** will provide basic hydrological and meteorological near real time data in a standard format and, if possible, validated long-term data series, for flood risk management
- Drought management and water allocation show a need for **developing an improved water balance** for the Danube River Basin as an element for facing the expected upcoming water quantity challenge

---

# ICPDR activities and next steps (2)

---

- Knowledge and exchange of information on **water scarcity and droughts** as well as on **ice events** is expanded; the following reports were published by the ICPDR:
  - “The 2015 Droughts in the Danube River Basin” report outlines meteorological and hydrological situation of the Danube River Basin, impacts and measures related to droughts as well as lessons learned and conclusions
  - “Report on the Ice Event 2017 in the Danube River Basin” provides information on basic features of river ice, past ice events in the Danube River Basin, current policy for ice control in the Danube River Basin, a description of the ice event in January/February 2017, lessons learned and recommendations for the future
- Planned Guidance document on **sustainable agriculture** will cover climate change aspects
- Close cooperation with the **JRC in regional modelling of climate change scenarios** for the Danube River Basin is ongoing

---

# Lessons learnt and recommendations **ICPDR** **IKSD**



- 
- **Step-wise and cyclic approach of WFD and FD** river basin management planning process well-suited to adaptively manage climate change impacts
    - Building on increased experience and knowledge
    - Taking into account updated climate change scenarios and expected water related impacts
  - **From Knowledge to Action:** User-friendly online tool supporting users in obtaining information about possible adaptation measures (<http://www.icpdr.org/main/climate-change-adaptation-measures-toolbox>)
  - **Awareness of ongoing adaptation processes need to be raised and exchange need to be ensured** on all levels – national, sub-basin and international

For more information:

<https://www.icpdr.org/main/activities-projects/climate-change-adaptation>

